

Addressing Health Inequalities through Community Participatory Action Research: a collaborative approach to training and education



Joanne McEwan – Public Health Development Manager

Em Rahman – Head of Public Health Workforce Development, Branwen Thomas - Workforce Programme Lead

Schools of Public Health working across Kent Surrey Sussex; Thames Valley; and Wessex

Why Community Participatory Action Research?

HEE's role

to train and educate the public health workforce

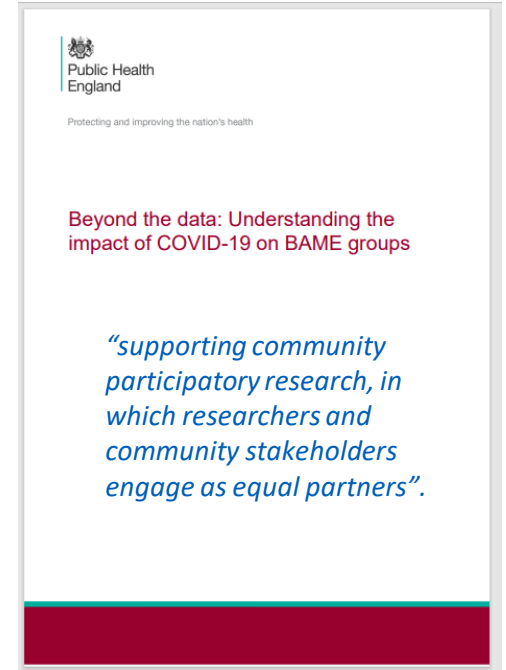
Question: Are community researchers a forgotten workforce?

What we did

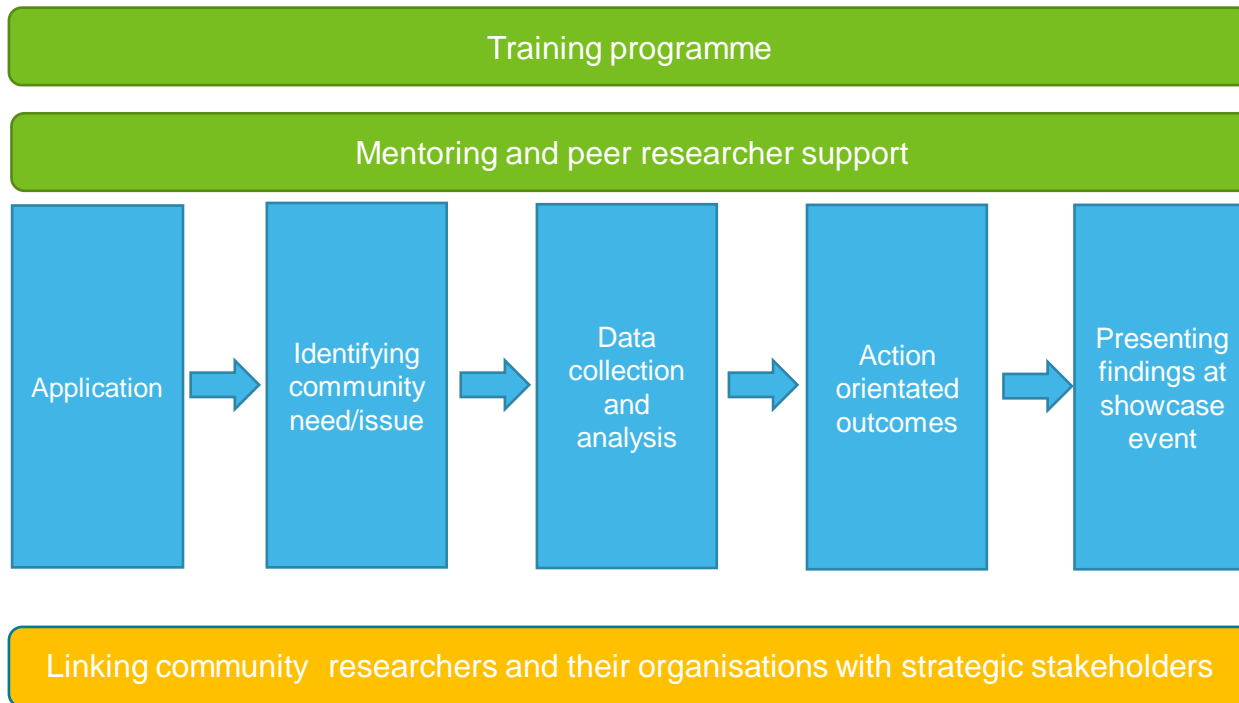
Trained and mentored 35 community researchers in SE from grassroots and voluntary sector organisations

Thinking and working differently

- in response to a national document: Beyond the Data, recommendation 2
- working directly with community organisations delivering training and mentoring on how to do community research
- co-productive training and mentoring on community participatory action research where communities set the agenda on health needs and the research required
- community researchers linked with strategic partners to enable the outcomes of research



A researcher's journey



Key principles of project

- **Valuing** the researchers worth - Payments for researchers – valued, not another volunteer workforce
- **Co-production from the start** – developing recruitment processes, training programme
- **Collaboration** - broad membership of steering group
- **Community led** – freedom to choose their research/set priorities
- **Inclusion** – recruitment of those genuinely connected to communities, inclusion specialist on panel, ensuring representation at all levels.
- **Learning from the communities** – acknowledging we are not the experts, flexible and accommodating



Challenges, Successes and Opportunities

What went well (surprisingly!)

- Online delivery and ability to cover large geographical area
- Low attrition (researchers who left were replaced)
- Most research project complete

Challenges

- Researcher payments
- Engaging researchers early on
- Local research support integral
- Further development for this workforce
- Engaging strategic partners from early stage

Learning

- Support to complete applications
- More support and training for NHS Trusts on what it means to work with communities as equal partners

Opportunities

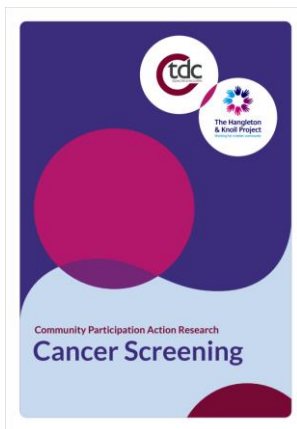
- Researcher network
- Leads forum

Key Markers of Success

- Recruitment
- Engagement
- Training
- Celebrating success

Examples of research

Access to health services



Trust for Developing Communities (Brighton) and Hangleton & Knoll Project

(7 researchers)

Mental Health

The Impact of Covid-19 on Mental Health of Ethnic Minority Men in Reading

Tariq Gomma

May 2022



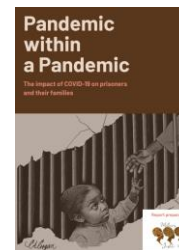
Alliance for Cohesion and Racial Equality

Tariq Gomma

Inclusion

Mothers 4 Justice

Jabu Nala-Hartley



Healthwatch Oxfordshire

Omotunde Coker

Toolkit - HEE TV website

This toolkit can be adapted to reflect the communities in scope.

Guidance document

Application form

Brief for training provider

Recruitment criteria

Training outline

Showcase summary of work and programme

Evaluation

[Public Health Wider Workforce - Working across Thames Valley \(hee.nhs.uk\)](http://hee.nhs.uk)

'A wonderful event; so great to see how all the researchers connected and made a collective voice for change'



'This has been an incredible event and huge thanks to all – really person-centred, relational and rich work – we can make these changes together'



Thank you very much to all the presenters. This is very important work you are doing; Work which can actually saves lives.'



'Fantastic morning of presentations and videos - thank you everyone - really powerful, thought provoking, and a clear call to action to do more of this type of approach - for us to listen - and take action'

