

Community Researchers

Terry Adams

Trust for Developing Communities

Kalishia Davey

Trust for Developing Communities

Aleya Khatun

Hangleton and Knoll Project



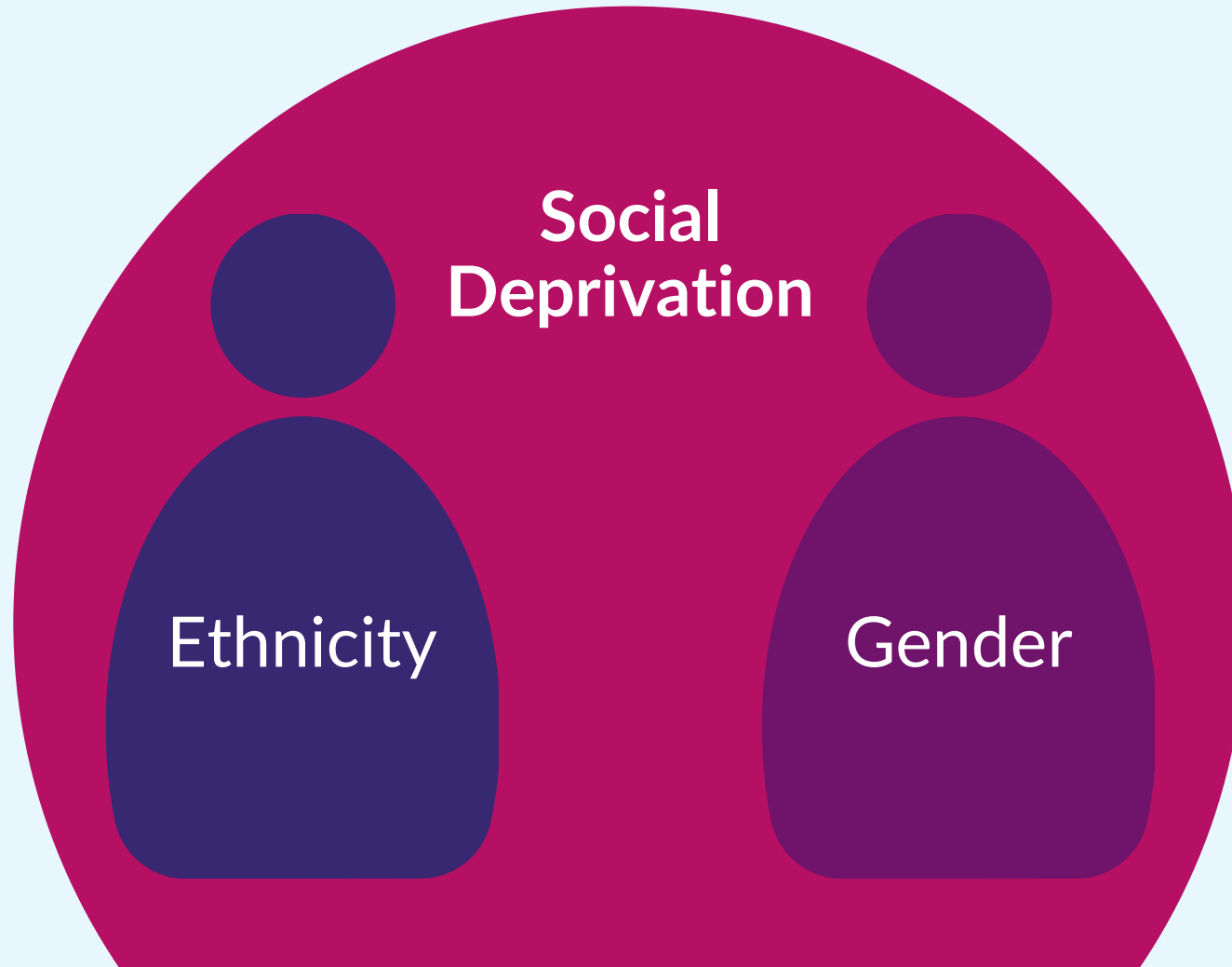
**The Hangleton
& Knoll Project**
Working for a better community

Community Participation Action Research

Cancer Screening

Context

Major determinants of cancer screening uptake in UK:



Community Participation Action Research Project

Ethnically diverse community researchers who have trusted relationships with the participants



Male and female
Brighton & Hove
residents from
Black, Asian and
ethnically diverse
backgrounds



Key Findings

1. Trusted relationships in community groups are key



'... we talk about health stuff all the time at our group'

2. Cancer knowledge differed across genders



Knowledge of cancer symptoms amongst the male respondents in particular was limited.

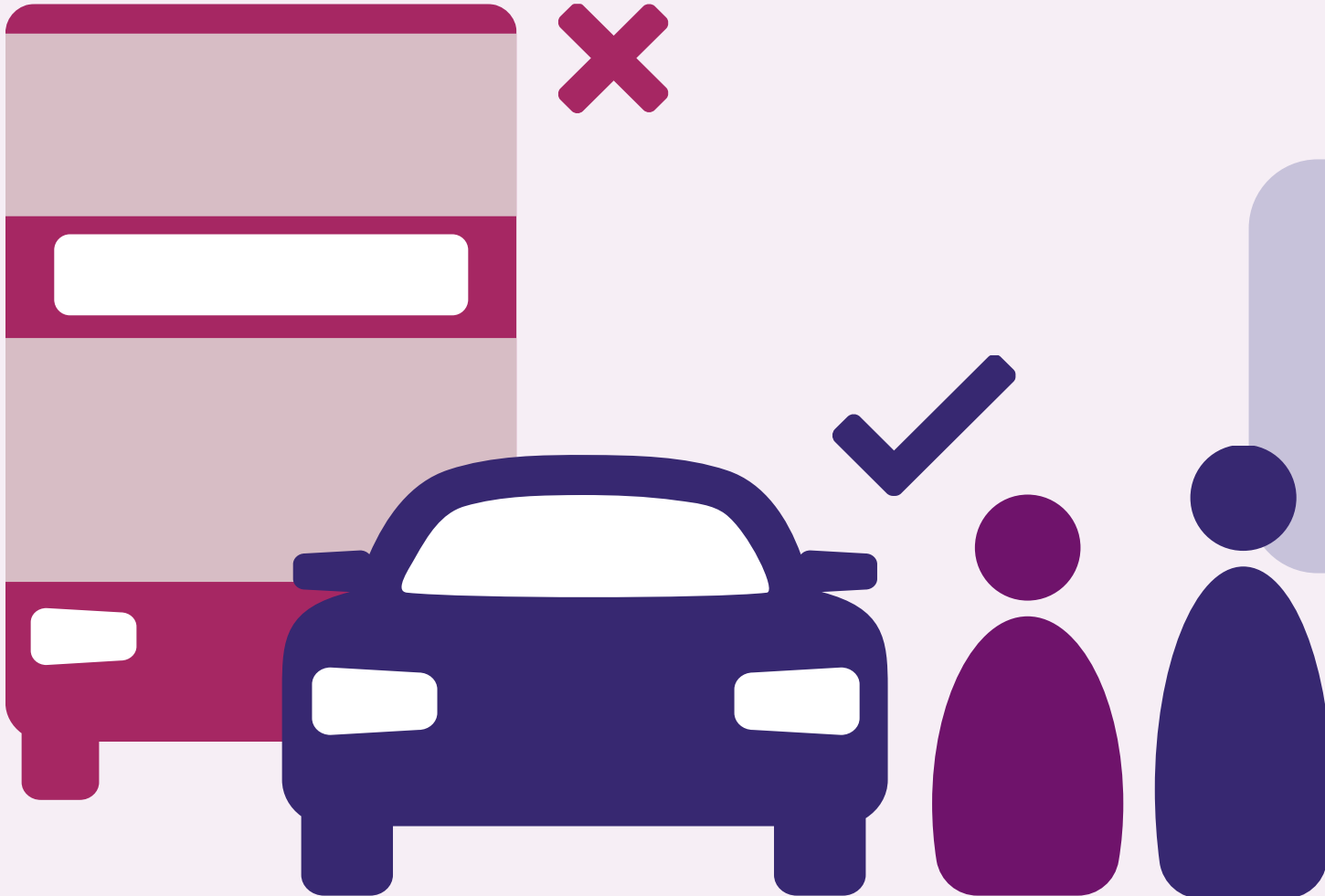
3. Barriers to accessing information

'If your English is not very good, everything is difficult'

'Everything online...which do not know how to use'



4. Logistics

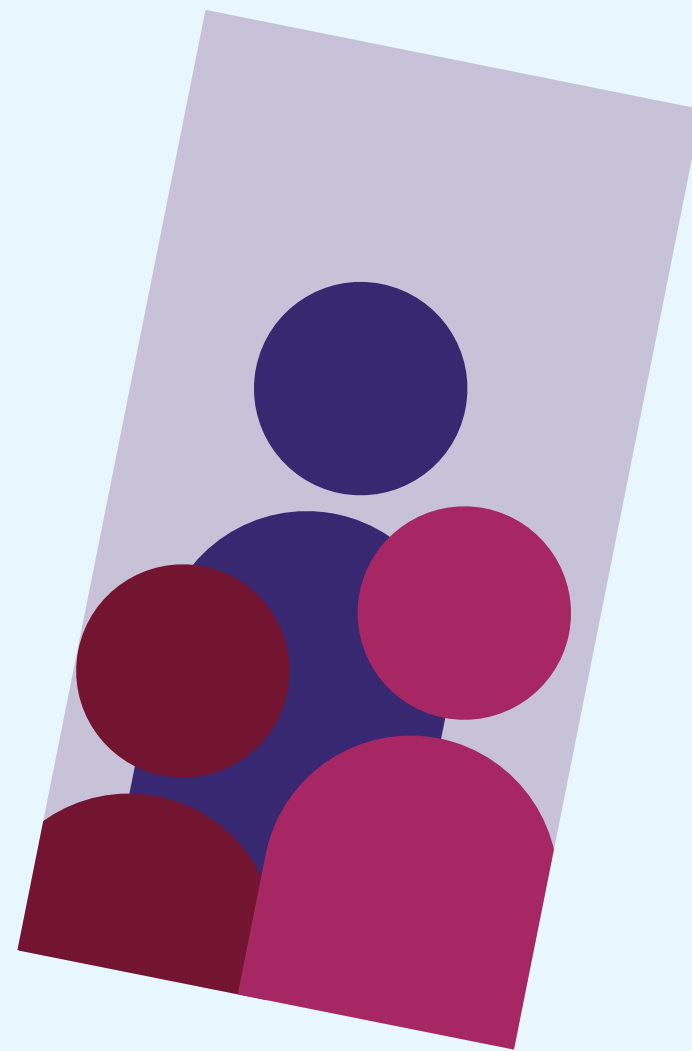


'Few people who have cars help each other out and go with them'



Recommendations

1. Accessible and culturally appropriate information



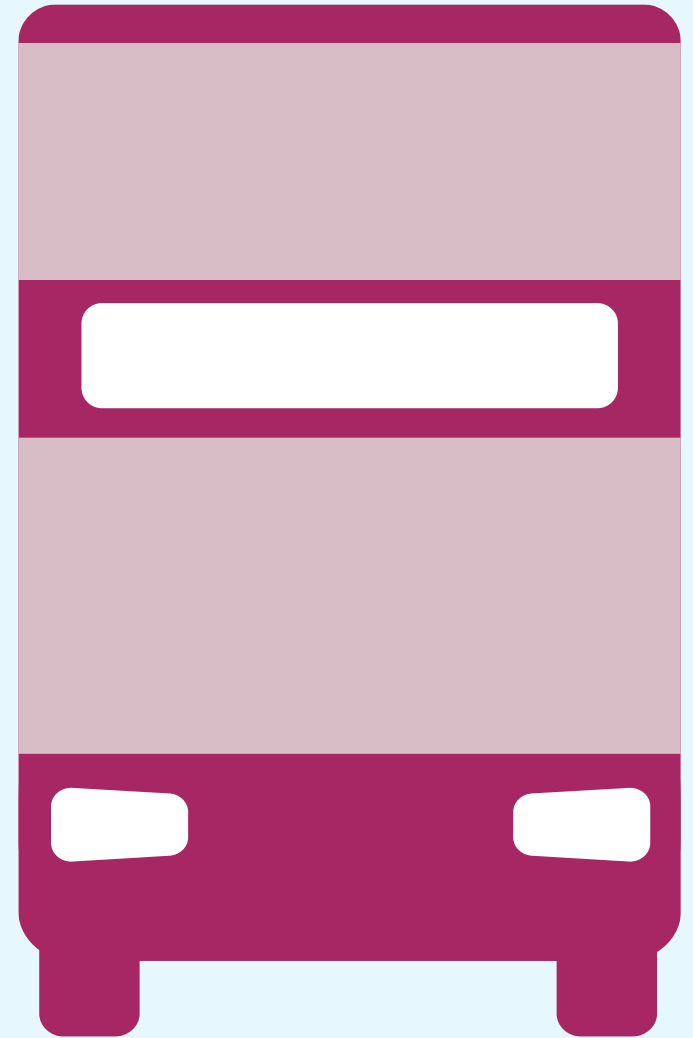
2. Culturally welcoming environments



3. Peer support combined with learning opportunities



4. Flexible transport options



5. Commissioning focus

Quality
Outcomes



**The Hangleton
& Knoll Project**
Working for a better community

Thank you

Acknowledgements

The CPAR programme was initiated and funded by Health Education England South-East and developed in collaboration with the Office for Health Improvement and Disparities (previously PHE), the Scottish Community Development Centre and NHE England and Improvement.



Health Education England



NHS England and NHS Improvement

