



Inclusive Communities
Partnership

IMPACT REPORT

**FOR BRIGHTON
AND HOVE CITY
COUNCIL**

**EXECUTIVE
SUMMARY**

2020 • 2021



IMPACT REPORT • FOR BRIGHTON AND HOVE CITY COUNCIL • 2020-2021

The Inclusive Communities Partnership includes:



The Hangleton
& Knoll Project
Working for a better community



Possability
People



1 Introduction & Welcome

The **Inclusive Community Partnership**, led by TDC, works to improve the well-being, resilience and inclusion of communities in Brighton and Hove that face inequality and poverty.

We are a partnership of **eleven** trusted, high quality, **locally based charities**, who are combining our expertise and resources to integrate community development and engagement to tackle inequality in our city. In 2020, we won the Brighton and Hove City Council three-year Third Sector Commission and **this report highlights the extensive work** we have delivered across the first year - meeting council priorities whilst responding to the unprecedented challenges of Covid-19.



2 Diverse Communities

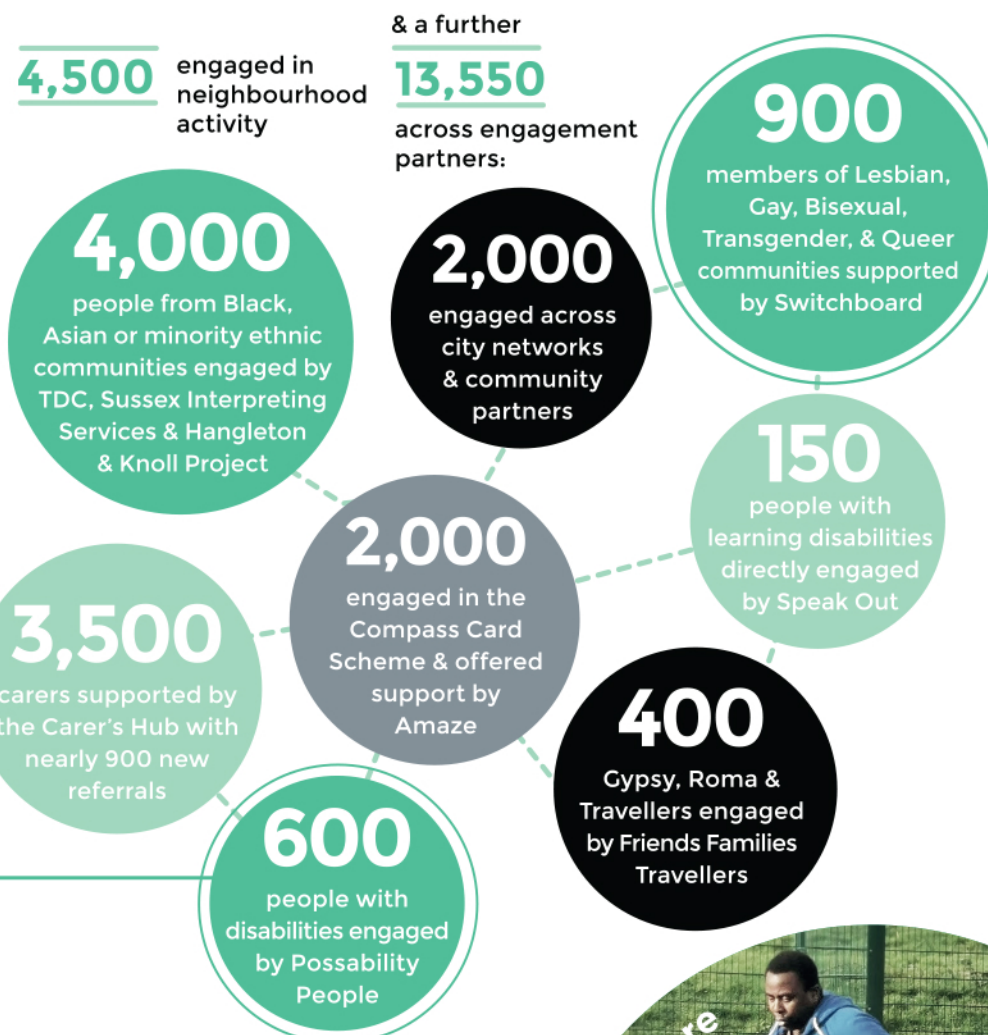
By partners **working together** we can connect with people from different communities of identity, interest, or place. e.g., Mind the Gap involved The Carers Centre looking at barriers to engaging people from Black, Asian or minority ethnic communities and LGBT communities.

Partners **increased their outreach** into neighbourhoods and brought in additional resources, e.g., Active Sussex grant funding to engage people from Black, Asian or minority ethnic communities in sports and activities.



A short film showing how Covid-19 has brought **unprecedented challenges** to excluded communities and how the partners have been able to respond. Film funded by **THE CHARITIES AID FOUNDATION**

ACTIVE SUSSEX
FOOTBALL IN
EAST BRIGHTON



3 Communities Tackling Covid

IMAGE: YOUNG PEOPLE DELIVERING
EAST BRIGHTON NEWSLETTERS

TDC and Community Works responded swiftly
– setting the **Covid Help Directory**.

<https://covidbrightonhove.org.uk/>



Hundreds of new volunteers and mutual aid groups **joined forces** with community anchors to develop an ever-growing emergency food network and check on their shielding and other isolated or vulnerable residents.



“ I’m really happy that I have been able to help my local community during the pandemic.

It’s been a lot of hard work, but the (Pankhurst) pantry has helped lots of families who have been struggling to feel supported and cared about.”

JANE, VOLUNTEER LEAD, PANKHURST PANTRY

4 Healthy Living

4,000 engaged in healthy neighbourhood activity

100 activities funded:

25 increasing active living

16 improving mental health & wellbeing

11 improving nutrition

23 supporting healthy starts for children & young people

14 reducing loneliness & isolation

11 supporting healthy ageing

“ I am so glad I joined this group; at points I have felt suicidal and being involved in the group has literally saved my life.”

MEMBER OF MEN’S EXERCISE GROUP



IMAGE: CHATTERBOX LUNCHES
FOR THE ISOLATED UNDER
TIER 4 RESTRICTIONS

5 Staying Connected

Community groups & forums made sure people stayed connected, with several moving online and developing creative solutions like telephone trees, activity packs, door-step visits, and trails to keep people who were not online to stay connected.

CLICK HERE

TDC & Hangleton & Knoll Project **support networks** of community and public services across the city

“Thanks to the phone calls and emails received I was able to access the COVID vaccination process at Portslade Medical centre & was given the confidence to attend.”

SUNDOWNERS COMMITTEE MEMBER

“HKP have been quite simply brilliant in supporting me when I have encountered difficult situations and have always checked in with me to make sure that I am ok.”

HANGLETON AND KNOLL RESIDENT



LEFT IMAGE:
CARERS VOICE
MEET ONLINE



Artists **Walter** and **Zoniel** worked with local communities to create

A Simple Act of Wonder

bringing a colourful trail of huge outdoor artworks to the streets.



6 Local Economy, Assets and Resources

“Existing social infrastructure has been vital to the crisis response....

It's what makes community organisations a fundamental part of the flourishing and wellbeing of our society.”

WE WERE BUILT FOR THIS
LOCALITY REPORT - 2020



£360,000

additional funding was brought into community groups for grassroots activity - with support from development partners

£195,000

in kind donations - mostly food

IMAGE: VERY LOCAL
FOOD HUB STALL



**5,000
MILES**

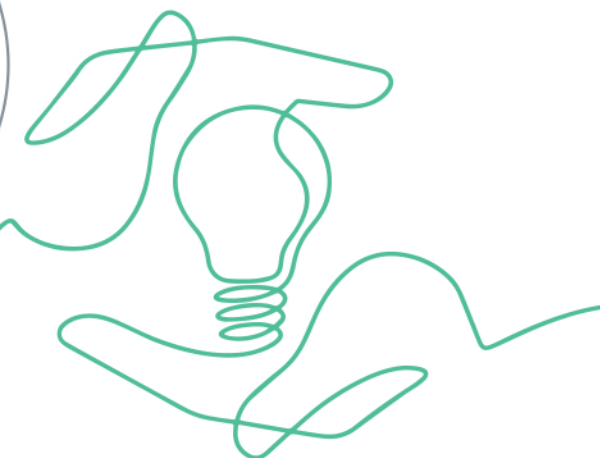
of travel has been saved by regular meetings and forums moving online



CLICK TO PLAY

- A short film capturing learning as communities adapted to the pandemic.

Film funded by
**THE CHARITIES AID
FOUNDATION**



“

The experience I gained helping to coordinate the Bristol Estate Food Hub was invaluable as it taught me how to manage groups of people, be highly adaptable to challenges as they arise & put compassion at the forefront of my work.

I greatly enjoyed the work that I did on the project and I feel it will have enormous benefits in my confidence when I undertake new roles in the future.”

VOLUNTEER COORDINATOR
BRISTOL ESTATE FOOD HUB



IMAGE: CLLR KNIGHT
& MP RUSSELL MOYLE
COLLECTING FOOD FOR
COMMUNITY MARKET.

Our **full report** shows how partners contributed to the council's planning around communications, travel, parks, Learning Disability and SEND Strategies. **Healthwatch** have reported separately on their Hospital Discharge Wellbeing Project.

7 Community Places

Community Buildings had to close and then repurpose, often housing emergency food work. **Community Buildings** were supported to develop risk assessments, recruit new volunteers and access grant and furlough schemes.

“ CBN meetings were invaluable. I was new in post and the guidance gave me the confidence I needed to face the demands of the pandemic ”

SUSAN – MANAGER
EXETER STREET HALL

25

community buildings supported to access grant & furlough schemes

48

buildings supported through the Community Buildings Network

2,800

people following Albion Community Garden Instagram in Queens Park ward



IMAGE:
THE EDGE
COMMUNITY
CENTRE

IMAGE:
ALBION
COMMUNITY
GARDEN

Green spaces have also taken on a new significance during the lockdowns. Partners have supported communities to access the Council's Carbon reduction grant scheme creating numerous new activity projects linking people into our natural environment to those greening our more urban centre.

Our more outlying communities have seen an increase in growing food through **community gardens, allotments, and orchard planting**. Whilst those centrally have needed to find spaces to meet outside or share images online to connect those shielding or isolating.

“ There is definitely a greater need shown by those passing by to interact – it's a sort of reassurance that all is well. ”

ALBION GARDEN VOLUNTEER



With thanks to Brighton and Hove City Council for their vital support and to our city's best asset - our communities.



“ We are leaving Brighton & Hove better than we found it at the beginning of 2020.

I'm so proud of my team, I'm so proud of what we've been able to do and I'm so proud of the partnership we're in and all the other organisations that are also achieving incredible things across the city. ”

JACOB BAYLISS
CEO SWITCHBOARD



**The Trust for Developing Communities
Community Base, 113 Queens Road, BN13XG**

**Tel: 01273 234769
info@trustdevcom.org.uk**

www.trustdevcom.org.uk

